

CITY ACCOLADES

- ◆ **Top 25 Best Place to Live for Families** (Fortune Magazine)
- ◆ **Best Places in CO for Young Families** (Nerd Wallet)
- ◆ **American City on the Rise** (Nerd Wallet)
- ◆ **All-American City** (National Civic League)
- ◆ **Millennium City** (New York Times)

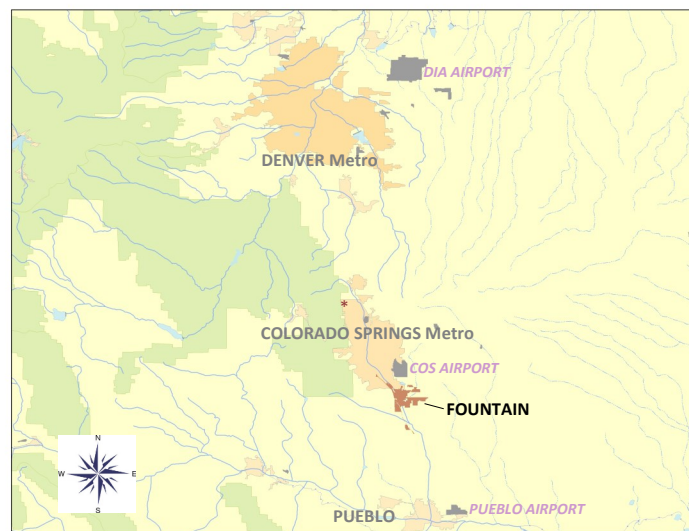


29.8% Reduction in Waste tonnage for Metro;
Renewable Mission

LIFESTYLE AMMENITIES

- ◆ 50 miles of Trails and Bike paths
- ◆ 1000+ acres of Open Space Parks
- ◆ Summer Farmer's Market
- ◆ 8+ Cultural/Equestrian/Naturalist Centers
- ◆ 13+ Community Events and Festivals annually
- ◆ 18+ City Sponsored Youth Sport/Rec Programs

Cost-of-Living in Fountain is comparatively lower by
21% on East coast and 16% lower on West coast



ACCESSIBILITY

- 10 minutes/ 7mi Colorado Springs Airport www.flycos.com
- 15 minutes/ 12 mi Downtown Colorado Springs
- 25 minutes/ 27 mi City of Pueblo (south)
- 1.25 hours/ 75 mi City of Denver (north)
- 1.50 hours/ 95 mi Denver International Airport www.flydenver.com
- 2.5 hours/119 miles/ Ski Towns/Breckenridge

*denotes military bases

23.4 mins average Workforce Commute



ABOUT US

Fountain is the gateway to the Pikes Peak region,
offering access to affordable lifestyle in a pure Colorado setting;
variety of activities, local fare, and entertainment abound.

2nd largest City within El Paso County

DEMOGRAPHICS

	City	Valley	Metro
Population	32,151	109,639	751,431
Median Age	32.4	30.2	36.4
Median Income	\$71,705	\$71,122	\$69,160
Single Family Home <small>(median Sales price)</small>	\$338,219	\$308,446	\$375,383
Total Households	11,181		
New Housing <small>(7 yr. development que)</small>	3,257		

Source: ESRI

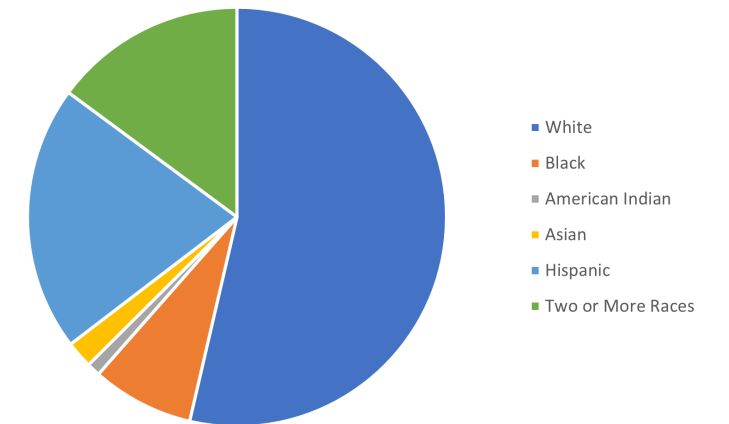
POPULATION DIVERSITY

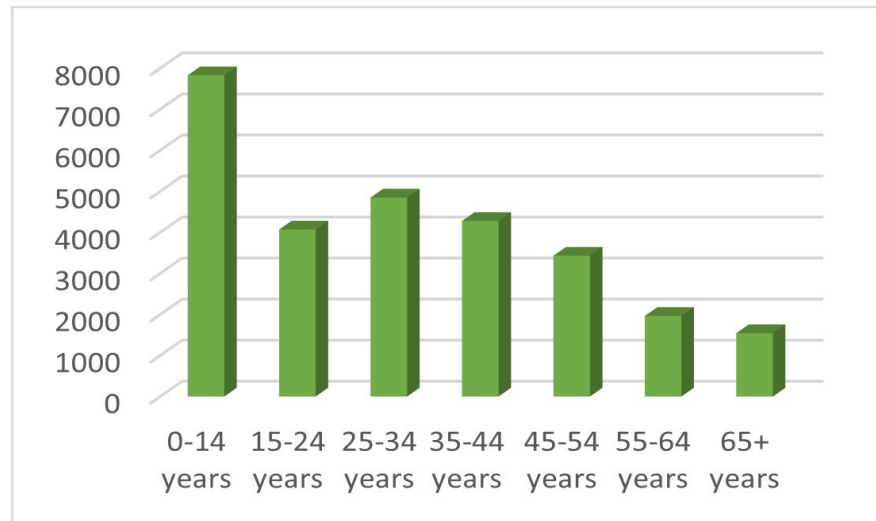
White	69.6%
Black	11.3%
American Indian	1.3%
Asian	2.9%
Hispanic	20.7%
Two or More Races	7.6%

Source: ESRI

SEGMENTATION

Male	49%
Female	51%
Avg HH Size	3.00





AGE % OF POPULATION

0-14 years	7827
15-24 years	4069
25-34 years	4847
35-44 years	4276
45-54 years	3430
55-64 years	1963
65+ years	1542

54% population growth since 2000

Source: ESRI

TOP EMPLOYMENT INDUSTRIES

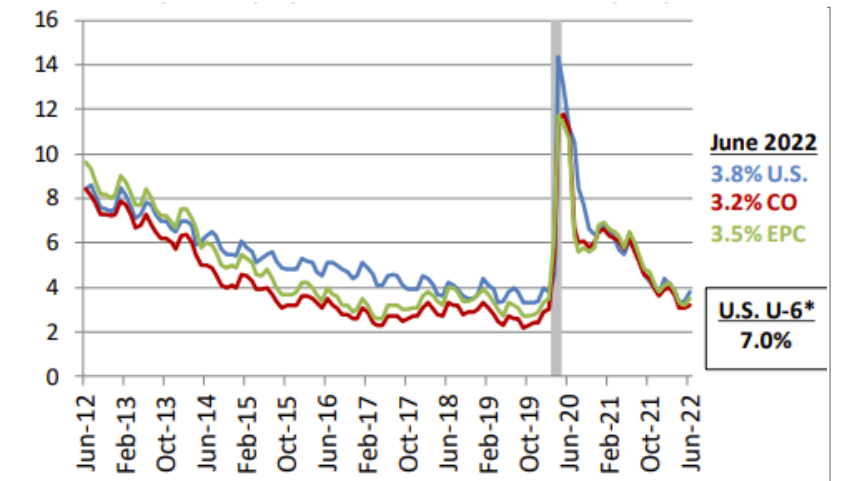
541 businesses with 23,510 EE

- ◆ Homeland Security
- ◆ Trade & Transportation Logistics
- ◆ Specialized Manufacturing
- ◆ Creative Industries
- ◆ Retail Trade

Military Veterans' Skill-sets

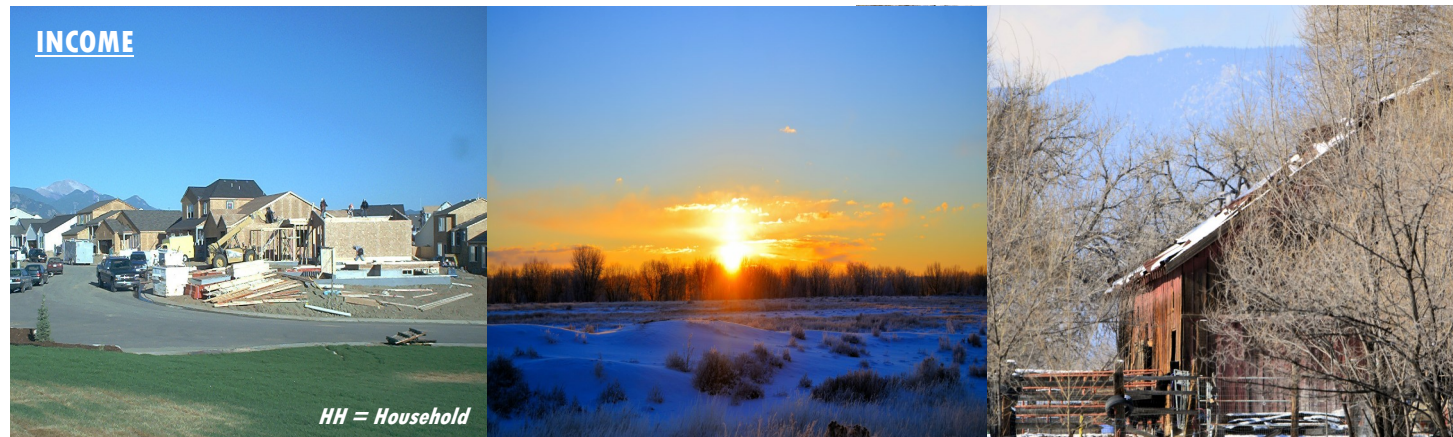
- ◆ Welding
- ◆ CDL-A
- ◆ Management
- ◆ CyberSecurity/ IT
- ◆ Construction

UNEMPLOYMENT RATE



Source: UCCS College of Business

500 Veterans exit Ft. Carson Army Base monthly



INCOME

HH = Household

Avg HH Income \$90,328

(U.S. National \$40,363)

Median HH Income \$71,705

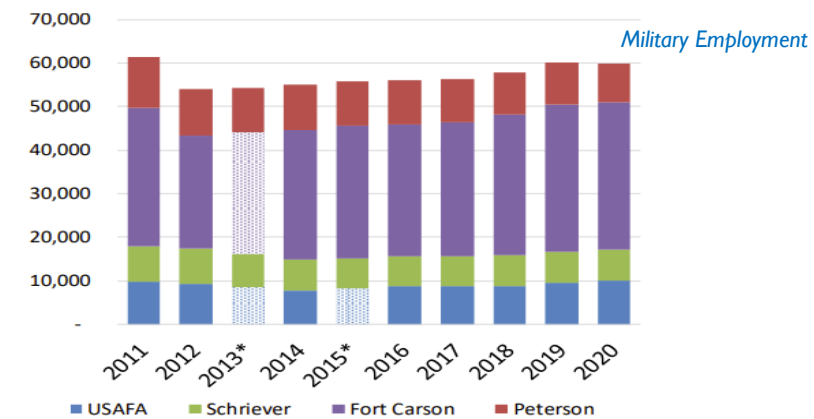
(U.S. National \$70,784)

Per Capita Income (PCI) \$29,891

(U.S. National \$69,288)

1 of 4 Fastest Growing Counties in Colorado

MILITARY BASES in REGION



64,814 Ft. Carson Army Base population; largest State employer

EDUCATION

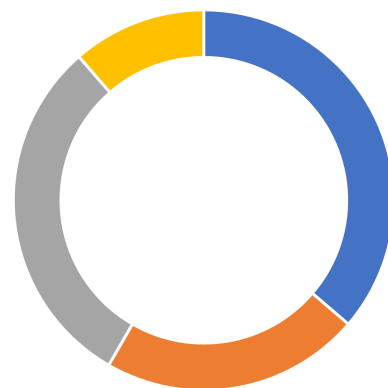
High School Graduate (or GED)	24.2%
Associate's Degree	14.7%
Bachelor's Degree	20.2%
Graduate Degree	7.6%

** #2 Most-Educated State in U.S.

87.1% k-12 Graduation Rate

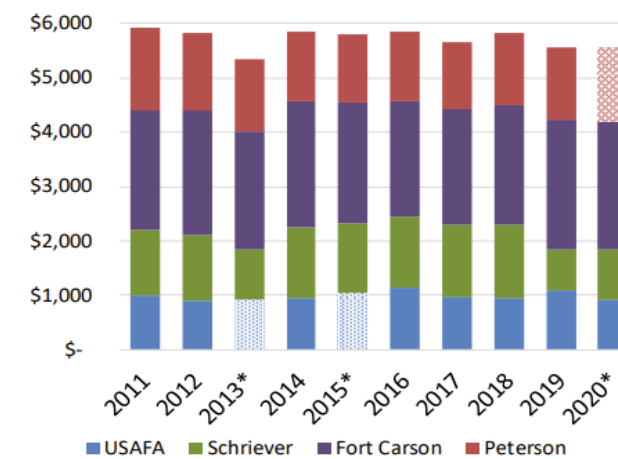
42% Higher Education attainment

- High School
- Associates
- Bachelors
- Graduate



Source: ESRI; Yahoo

Military Economic Impact



\$2.74B Ft. Carson Army Base Economic Impact Value

\$8.171B Economic Impact Value of Four Military bases in the Region

Source: UCCS College of Business